



The

Peace Lutheran Messenger

6580 Twenty-Four Mile Road • Shelby Township, Michigan 48316

April 2025 Table of Contents

*Christ is Risen!
(Page 1)*

*A Message from Our Deacon
A Message from the Editor
(Page 2)*

*A Message from Our EC
Director
(Pages 3-4)*

*Board and Ministry News
(Pages 5-9)*

*“Umbrellas”
Page 10)



Christ is Risen! He is Risen indeed! Alleluia!

“He is not here; He has risen, just as He said.” Matthew 28:6



This is our Easter exclamation as we joyfully proclaim our victory through Christ’s triumph over death. Because of Easter – we have received the greatest gift from God. With the empty tomb – we are filled with life forever. Guilt has forever been replaced by the joy of forgiveness. Life is good – through Jesus Christ our Savior. Alleluia!

**Join us as we worship and witness
our Lord’s great love for all people!
Please consider INVITING SOMEONE
who needs to hear
how much God loves them!**

HOLY WEEK WORSHIP SCHEDULE

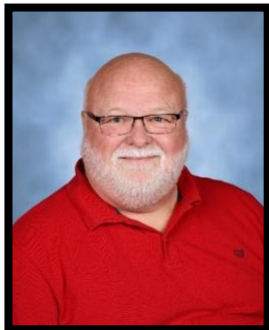
Palm Sunday – April 13	8:30am & 10:30am
Maundy Thursday – April 17	6:30pm
Good Friday – April 18	12:00pm & 6:30pm
Easter Sunday – April 20	8:30am & 10:30am

EASTER BREAKFAST

Easter morning in the gymnasium 9:15am-10:30am

**Peace “Youth Group” Fundraiser
(free will donation)**

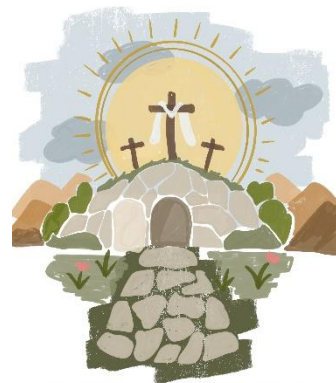
A Message from Our Deacon...



April showers bring May flowers! I guess that we say this to help us get through the cloudy, rainy days. Well, the month of April brings us a lot to think about. April Fool's Day is on the first. A lot happens on this day. I think that I will just leave that one alone.

Many think that February 14th is the day that we celebrate love. I would like you to think about Friday, the 18th of April. On this day, we see real love. This day is called Good Friday. Our Savior, Christ Jesus showed what real love looks like. On Good Friday, we celebrate the love that God has for all of us – even the whole world! Jesus gave His life to pay for all of our sins.

Every single one. The sins that Adam committed, the sins that Moses committed, the sins that you committed, and even the sins that I committed! Our Savior's love is beyond words! But wait, we are not done. Just three days later, we get to celebrate the biggest day on the Christian calendar –EASTER! He is risen. He is risen indeed. Aallelujah! Our God is so big that even death could not keep Him! Because He lives, we can face tomorrow!



I look forward to seeing YOU in church on Maundy Thursday, on Good Friday, and on Easter Sunday. We get to come into God's House to say 'thank you' for loving us so much!

I wish you many Easter Blessings!

Deacon Jim Schurig

A Message from the Editor...



From the Editor

Dear Readers,

Happy Easter! He is risen! He is risen indeed! May the miracles of the Easter Resurrection bring you hope, joy and personal renewal all year long!

The deadline for May's "Peace Lutheran Messenger" is **Sunday, April 20.**

Jackie Pilan

EASTER BREAK AND OFFICE HOURS

Easter Break: April 18-April 21

Office Hours: April 18 – 9:00am-12:00pm

April 21: **CLOSED**



A Message from Our E.C. Director...

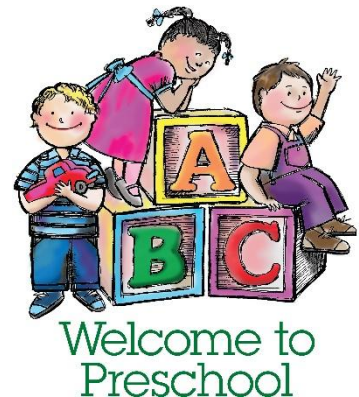


There is no better time than spring to spark the curiosity in preschoolers. This season offers endless opportunities to discover, whether it is observing the growth of plants, investigating insects, or simply listening to the sounds of nature. As the world begins to bloom around us, our preschoolers will engage in activities both inside and outside the classroom where students can ask questions, make observations, express their excitement about the natural world around them, and connect with God's creation in deeper ways.

One of the highlights of our spring curriculum is our upcoming farm field trip. Our preschoolers will visit Wolcott Mill Farm (3s) and Upland Hills Farm (4s), where they can engage in hands-on learning and observe farm life up close. From feeding animals to exploring the garden, the children will have a chance to connect with the earth and experience the beauty of God's creation in a very personal way. This field trip is designed to inspire awe and wonder, while also teaching valuable lessons about where our food comes from and how we care for the environment. Our Young 5s class will visit Shelby Township's own Reptarium where they will learn about the amazing animals God has created in a hands-on learning environment!

Exciting Enrollment Opportunity: Panther Cubs (Parent/Caregiver-Child) Preschool Class!

We are thrilled to announce that enrollment is now open for our Panther Cubs. Our parent/caregiver preschool class is for children age 2, where you and your child can embark on a fun, hands-on learning adventure together! This unique class is designed to nurture the bond between parent and child while providing an enriching preschool experience in a supportive Christian environment. In this special class, both parents and children will engage in exciting activities that foster creativity, exploration, and spiritual growth. With a focus on hands-on learning, our lessons are crafted to be interactive and engaging, creating a fun learning environment. From art projects to Bible stories, music, and play, your child will experience the joy of learning — and you will be right there alongside them, guiding and growing together! Spaces are limited, so do not wait to secure your spot!



To enroll, simply visit <https://pl-mi.client.renweb.com/oa/?memberId=18301or> contact Suzette Quail at 586-731-4120 for more details.

☀️ Preschool Summer Camp: Fun, Exploration & Adventure Awaits! ☀️

This summer, we are excited to offer three weeks of action-packed **Preschool Summer Camp** for children aged 3-6 that is filled with creativity, outdoor fun, and hands-on exploration! Our camp is the perfect way for your little ones to engage in exciting activities, make new friends, and learn while having a blast. **Enrollment Opens on April 1.**

Continued on Page 4

Camps run Monday-Thursday from 9:00am-12:00pm. (Children must be potty-trained). Children will bring their own water bottle and healthy snack (NO NUTS) for each day of camp. Campers may be photographed and photos shared for media purposes. If you do not wish for your child's photo to be used, please email squail@peaceshelby.org.



...a fun place to
play and learn!

🌻 Week 1, June 2-5, 9:00am-12:00pm, Fun in the Sun!

Each day of camp is packed with fun, games, crafts, and plenty of opportunities for your child to grow, laugh, and learn. Whether it is exploring the outdoors, making new friends, or discovering new talents, this summer is sure to be filled with memories that last a lifetime!

🌲 Week 2, June 9-12, 9:00am-12:00pm, S'More Camping Fun

Get ready for **camping adventures** like never before! From outdoor games and nature, walks to building pretend campfires and learning about God's beautiful creation, our preschool campers will have an unforgettable time. They will experience all the joys of camping, while staying safe and comfortable in our nurturing environment.

🧱 Week 3, June 14-17, 9:00am-12:00pm, Lego Exploration and Design

Calling all future builders! This summer your child will have the opportunity to dive into the world of **Lego exploration** and design. They will learn to create amazing structures, explore shapes, and develop problem-solving skills while using their imagination to build and design! It is a fun, hands-on way to spark creativity and teamwork.

Spaces are Limited!

Do not miss out on this incredible summer adventure for your preschooler. Space is limited, so make sure to **enroll today** and guarantee your child's spot in our exciting summer camp!

To Enroll: Visit our website at <https://www.peaceshelby.org/preschool-summer-camps> for enrollment link beginning April 1.

We cannot wait to share the fun and joy of summer with your child!

Suzette Quail,
Early Childhood Director
Where learning, adventure, and faith come together!



During his earthly ministry, Jesus could be physically present in only one place at any given time. "Only those could speak to him who came to where he was," explained Archbishop William Temple. "If he was in Galilee, people could not find him in Jerusalem; if he was in Jerusalem, they could not find him in Galilee" (from *Readings in St. John's Gospel*).

Spiritually speaking, Christ's Ascension means he is with us wherever we find ourselves. Christ desires to be present with us everywhere we go. His presence is universal. He is here now. "Believed in throughout the world, taken up in glory" (1 Timothy 3:16, NRSV) — that is what the Ascension affirms. (Taken with permission from www.newsletternewsletter.com)

Board and Ministry News...

Join us for special services, from Palm Sunday through Easter Sunday, as we solemnly observe the passion and death of Jesus Christ and celebrate His Resurrection.

HOLY WEEK



APRIL 13 - APRIL 20

Holy Week 2025

April 13-20

Holy week at Peace is the week between **Palm Sunday** and **Easter**, observed with special solemnity as a time of devotion to the **Passion** of Jesus Christ.

PALM SUNDAY

APRIL 13

8:30AM & 10:30AM - IN PERSON
LIVESTREAMED @ 10:30AM

Palm Sunday

April 13

This **Palm Sunday, April 13**, join us for a celebration of faith, hope, and renewal. Come together in worship as we commemorate Jesus' triumphant entry into Jerusalem.

Join us in-person at 8:30am (Traditional) and 10:30am (Contemporary) in person and streaming at 10:30am.

MAUNDY THURSDAY

APRIL 17

6:30PM - IN PERSON & LIVESTREAMED

Maundy Thursday

April 17

Maundy Thursday signifies Jesus' last supper with His disciples. Join us in-person and streaming on **Thursday, April 17, at 6:30pm.**

This is a Traditional Music service.

"God loves each of us as if there were only one of us." —St. Augustine

(Taken with permission from www.newsletternewsletter.com)

GOOD FRIDAY

APRIL 18

12:00PM & 6:30PM - IN PERSON
LIVESTREAMED @ 12:00PM

Good Friday

April 18

On Good Friday, we observe the ultimate sacrifice of Jesus' crucifixion and death on the cross. Join us **Friday, April 18**, for this solemn and moving tribute **in-person and streaming at 12:00pm and in-person at 6:30pm**. This is a Traditional Music service.

EASTER SUNDAY

APRIL 20

8:30AM & 10:30AM
IN PERSON & LIVESTREAMED

Easter Sunday

April 20

Come celebrate the resurrection of our LORD with Easter Sunday service on **Sunday, April 20**, at **8:30am and 10:30am**.

The 8:30am is a Traditional Worship Service, while the 10:30am will be a Contemporary Music service.

We will be live streaming both services on Facebook, YouTube, and the Peace App. **There will be NO Adult Bible Study, JYM Bible Study, Nursery or KidZone.**

EASTER BREAKFAST

Sunday, April 20 9:15 - 10:30am
Peace Youth Group Fundraiser



Free Will Donation to Support Future Youth Trips

Easter Breakfast Youth Fundraiser

Join us for **Easter Breakfast on Sunday, April 20**, from **9:15am until 10:30am**. We will have a delicious breakfast buffet in the gym between Easter Sunday services. The breakfast is a youth fundraiser to help support our youth for future trips.



SPRING CLEANUP DAY
SATURDAY, APRIL 5
9:00AM – 12:00PM
VOLUNTEERS NEEDED

CONTACT JASONABELE@ICLOUD.COM WITH QUESTIONS

Spring Cleanup
April 5, 2025
 Peace's 2025 Spring Cleanup is scheduled for **Saturday, April 5, at Peace, from 9:00am-12:00pm.**

Any and All are welcome to volunteer.

Contact Jason Abele
 at jasonabele@icloud.com with questions.

Peace Lutheran Student Council Presents...



FAMILY SKATE NIGHT
MONDAY, APRIL 7TH
6:00-8:00PM

ADMISSION \$8.00
 BRING YOUR OWN SKATES OR
 BLADES. SKATE OR INLINE RENTAL \$200
 *ALL CHILDREN BETWEEN 3 - 17
 MUST PAY ADMISSION TO ENTER*

5062 VANDYKE ~SHELBY TWP
(586)731-5006 ~ WWW.THENEWRINK.COM




**WEAR YOUR
 THEME SHIRTS!!
 YOUR GIFT**

*Each of you has been blessed with one of God's many wonderful gifts to be used in the service of others. So use your gift well!
 Peace Lutheran Church



**DON'T COOK!
 PARTY SPECIAL
 1 WHOLE PIZZA & 4
 16OZ.DRINKS ONLY \$20**

Family Skate Night
April 7, 2025

Our Student Council is hosting a Family Skate Night and would like to invite all of our church and school families. **Please join us on Monday, April 7, from 6:00pm to 8:00pm, at The New Rink** for a night of fun. Skates will be available for rental for \$2.00 or you can bring your own. Admission is \$8. Food and Drinks will also be available for purchase. Please contact the school office at 586-731-4120.



PRESCHOOL SUMMER CAMP
COMING TO PEACE!
OPEN TO AGES 3, 4, 5 & 6

MONDAY - THURSDAY
9:00AM-12:00PM

\$100 REGISTRATION FEE

SCAN QR CODE TO REGISTER

- ✓ week of June 3 - Fun in the Sun
- ✓ week of June 10 - Smore's Fun
- ✓ week of June 16 - Lego Design & Exploration

MUST BE POTTY TRAINED!




Preschool Summer Camp
June 2, 20, 16, 2025

This summer, we are excited to offer 3 weeks of action-packed Preschool Summer Camp for children aged 3-6 that is filled with creativity, outdoor fun, and hands-on exploration! Our camp is the perfect way for your little ones to engage in exciting activities, make new friends, and learn while having a blast. Enrollment opens April 1.

Camps run Monday-Thursday from 9:00am-12:00pm. (Children must be potty-trained).

For more information and to sign up check out our page at:
<https://www.peaceshelby.org/preschool-summer-camps>.



60+ GROUP

SATURDAY | APRIL 5 | 11:00AM



GUIDED TOUR OF DENEWETHS GARDEN CENTER
TRANSPORTATION PROVIDED - MEET AT PEACE AT 10:30AM



PLEASE CONTACT HOLLY (HNELSON@PEACESHELBY.ORG) WITH QUESTIONS

60+ Group Field Trip!

April 5, 2025

Join us on Saturday, April 5, from 11:00am-12:00pm, for a guided tour of Deneweth's Garden Center ([16125 22 Mile Road, Macomb MI 48044](https://www.peaceshelby.org/16125-22-Mile-Road-Macomb-MI-48044)). A behind-the-scenes tour of the greenhouse facility and a chance to see how plants are grown. Meet at Peace at 10:30am for transportation or meet us at the Greenhouse. Contact Holly at hnelson@peaceshelby.org with questions. Visit [Greenhouse Tour – Deneweth's Garden Center](https://www.peaceshelby.org/greenhouse-tour-deneweths-garden-center) to learn more!

JOIN US FOR A KICK-OFF TO SUMMER!

JUNE 8, 2025 | FIRST PITCH 1:05PM | GATES OPEN 12:00PM

PEACE LUTHERAN AFTERNOON AT THE BALLPARK!



SIGNUP AT WWW.PEACESHELBY.ORG

Jimmy John's Sunday Outing

June 8, 2025

Peace is headed to the ballpark! Join your Peace Family on this kick-off to summer outing.

Join your Peace Family for an afternoon of fun, entertainment and baseball at Jimmy John's Field on **Sunday, June 8, at 1:05pm. Gates open at 12:00pm. Wear your favorite Peace shirt!**

Sign up for a fun day with your Peace Family at Peaceshelby.org or in our app!

PEACE "FULL" BLESSINGS

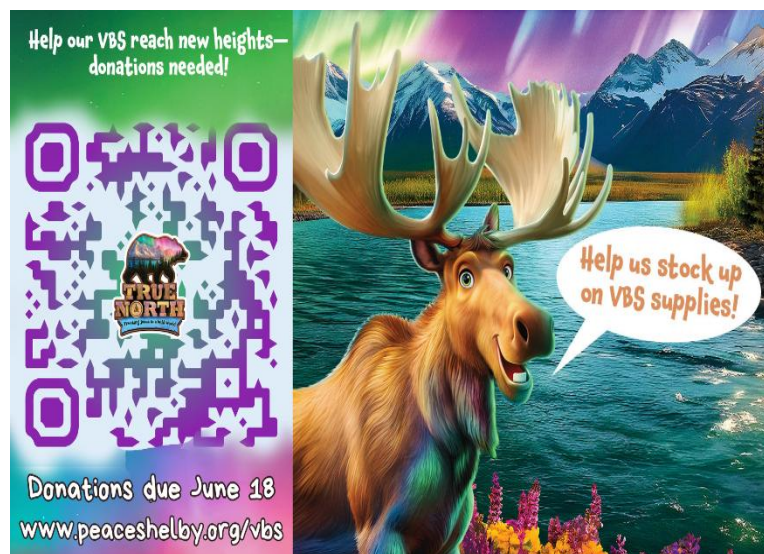
SILENT & LIVE AUCTION FUNDRAISER

Thank You

\$52,000 Raised



True North VBS



Point kids to Jesus, a faithful friend we can always trust.

Take kids on the ultimate Alaskan adventure where the northern lights shine over majestic mountains, racing rivers, and sparkling glaciers. As they trek the tundra, they will discover how easy it is to lose sight of what is true in our wild world today. Guiding them towards Jesus, True North VBS reveals that He is a faithful friend we can always trust. He is our True North!

PARTICIPATION REGISTRATION OPENS ON APRIL 1, 2025!

VOLUNTEER REGISTRATION OPENED ON FEBRUARY 1, 2025!

We need you! Volunteer positions for before and during VBS. VBS volunteers must be going into 7th grade* (Fall 2024) or older.

*Contact Holly for details on our younger volunteers.

HELP IS NEEDED FOR THE FOLLOWING:

- **CREW LEADERS:** Lead a small group of children by asking questions, encouraging kids, and helping kids and station leaders. NO PREPARATION REQUIRED.
- **GREETER:** Welcome participants and parents each day from 8:30am-9:15am.
- **REGISTRATION:** Help children sign each day from 8:30am-9:15am.
- **SIGN OUT TABLE:** Help participants sign out from 11:30am-12:15pm.

Hours are eligible for credit toward National Honor Society, Noah, Joy and Peace and other group volunteer hours. Volunteer sign-up is open!

DONATIONS

Monetary: Please consider supporting Peace VBS this year through a financial donation. You are welcome to add a separate donation with your offering on Sundays and/or use the link below to send funds electronically. Please clearly mark your physical donation or select "VBS Donations" from the fund dropdown menu when donating electronically.

DONATION WISH LISTS

Please sign up for as many items as you would like to. Please let Holly know if you have any questions!

Please access our webpage at <https://www.peaceshelby.org/vbs> to register and to donate!

Your prayers are also greatly appreciated!

UMBRELLAS

by Beverly Porter



I always think of April as Umbrella Month. Maybe I combine the two in my thinking because I collect umbrellas. This should come as no surprise to my friends and readers, for you already know that I am a collector of things. Umbrellas are low on my collector's radar, but never the less, my eyes are trained to scan for these additional treasures in resale shops.

Umbrellas come in all different sizes, shapes, colors, durability, function and personality. Some umbrellas want to be noticed and are frivolous and flashy. The fabric is often thin and fragile and the combination of bold patterns in vivid colors clearly inform that you might not want to use this umbrella in a heavy rain. This kind of umbrella I put in the Party Animal category. There are the umbrellas that are of the No Nonsense variety. They are made of a heavier fabric, and a strong rib system resides under the protective covering of utility and durability. This is the one you want to take in the threat of inclement weather. Then there are the collapsible versions, made to accommodate limited space. These umbrellas have little personality, for they hide themselves inside a wrap, like a swaddling cloth would conceal an infant. Granted they come in attractive colors and designs, and even size. The "mini" fits nicely in a woman's purse and the larger version is made for business briefcases and suitcases. I have a few of them and usually find them lost under my car seat or rediscovered in the back of a closet. They are not my favorites.

Design of the Opening and Closing mechanisms vary. Some are easy to use by touching a visible button, while others operate by a more difficult metal foot. Handles are a real tiebreaker in my choosing an umbrella. The long, smooth varnished wood, ending up in a graceful curve is the kind of handle usually found on the Party Animal umbrellas. I too, tend to gravitate towards style, rather than function.

Umbrellas have a lot in common with humans. Both are created, although "manufactured" is the term for umbrellas. The Creator has a plan and purpose for each one and that plan is seen in the uniqueness of each. Just as humans are drawn to each other according to their preferences and personalities, umbrellas are matched with their owners in like manner. But here commonality ends. As God's masterpiece of creation, we are more than fabric coverings. We are first covered by God. We are sheltered from the storms of life, as Psalm 91:4 assures us:

"He will cover you with His feathers, and under His wings you will find refuge."

He provides a safe comfort zone for us. Uncertainty and troubled times may threaten our peace and even our faith, but we remain huddled under the safety of His care, Can we also be more than a fabric covering? Can we be a shelter? Everyone needs a shelter. Perhaps all that is required is a smile that says, "I notice you." An encouraging word that reminds them of their worth or a social invitation to your home are good starters. Be a Shelter to someone today as the Lord has been a Shelter to you.

Please add this correction to last month's devotional, Friendship, by Beverly Porter. The last line following the Bible verse was mistakenly omitted. The writer feels that its inclusion is important in conveying the intent of the article.

"I want my friendship with Jesus to be defined as one where I daily invite Him to "Come and sit a spell."

Worship Services

On-Site Sunday Worship

8:30am Traditional
10:30am Contemporary

Online Worship

Streaming Sunday at 10:30am
on Peace's App, YouTube Channel and
Facebook Page

Sunday Bible Studies

Adult Bible Studies

9:45-10:30am

HSYM/JYM

9:45am

KidZone and Nursery

During the 10:30am Service

Wednesday Bible Studies

Wednesday Morning Bible Study

10:00am, Gathering Room

Wednesday Night Bible Studies

6:30pm, Bible Study
7:00pm, Zoom Study

Thursday Bible Studies

6:30pm, Women's Study,
Gathering Room

Saturday Bible Studies

Men's Bible Study
2nd and 4th Saturdays, 7:30am

Prayer Group

3:00pm, Mondays, at the
Klein Residence

Church Calendar

<https://www.peaceshelby.org/church-events-calendar>

To subscribe to or to unsubscribe from the .pdf e-news version of the monthly "Peace Lutheran Messenger," please send your request with your name and e-mail address to enews@peaceshelby.org.

Peace Lutheran Board of Directors

Rev. David Klemm, Pastor
Holly Nelson, Family Life Director
Michael Nelson, Principal
John Matalavy, President
Russ Kouba, Vice President
Aaron Wilks, Comptroller
Cindy Almstadt, Secretary
John Blanchard, Board of Elders, Chairperson
Jason Abele, Board of Trustees, Chairperson
Lisa Towne, Board of Christian Care, Chairperson
Tom McClelland, Board of Christian Education, Chairperson

School Faculty

Michael Nelson, Principal
Suzette Quail, Early Childhood Director
Andrea Reed, 8th Grade Teacher
Kathy Schurig, 7th Grade Teacher
Heather Abele, 6th Grade Teacher
Ruth Smigielski, 5th Grade Teacher
Carolyn Zuccherino, 4th Grade Teacher
Janel Stier, 3rd Grade Teacher
Marisol Nieto, 3rd Grade Teaching Assistant
Heidi Chaplin, 2nd Grade Teacher
Lana McIntosh, 2nd Grade Teaching Assistant
Erin Geffert, 1st Grade Teacher
Kristen Leo, 1st, 3rd, 4th Grade Teaching Assistant
Karin Sparks, 1st Grade Teaching Assistant
Megan Willemsen, Kindergarten Teacher
Gail Willemsen, Kindergarten Teaching Assistant
Kaysey Kasprik, Kindergarten Teacher
Mel Sledzinski, Kindergarten Teaching Assistant
Preschool Staff: Jessica Bailey, Victoria Chiakmakis,
Josie Docherty, Dena Galovich, Lisa Johnson, Melissa Jones,
Michelle Jones, Heather Lewis, Kaitlin Lewis Erin Olsen,
Amanda Pate, Lydia Tomczyk
Latchkey: Diana Griswold, Rebecca Polchowski, Suzette Quail
Lunch Coordinator: Jennifer McCoy

Office Assistants: Kim Domerese, Angela Hebeke,
Talayna Redford

Financial Accounts Manager: Diane Dawson

Deacon: Deacon Jim Schurig

Media Liaison: Jessica Franckiewicz

Website and App Maintenance: Jackie Pilan

Organist: Mark Holz **Praise Team Lead:** Stacy Babich

Contact Information

Office: 586-731-4120 Fax: 586-731-8935

Website: www.peaceshelby.org

Office Hours

Monday through Friday, 8:00am-4:00pm

Peace Lutheran Church and School
6580 24-Mile Road • Shelby Township, MI 48316